



What is Google Lens

Google Lens is available on most phones with google chrome and is one of the most powerful tools you'll use in your everyday life. It can identify flowers or plants, or makes sense of a menu in a foreign language.

While you don't need Google Photos to use Google Lens, [Photos also has plenty of powerful tools](#) to help make sense of your images.

What is Google Lens?

Google Lens works in a simple way. Aim the camera of your device at something you want to learn more about, and Google Lens will tell you what it is. Google Lens identifies or translates it for you, or gives you more information. For example, if you point your camera at the front of a restaurant building, Google Lens displays the menu and reviews.

We will break down exactly what Google Lens can do later, but the best way to learn is to give it a try!

What can Google Lens do?

Google Lens uses artificial intelligence that helps identify objects in photos and suggests appropriate actions. Here are some of the things you can do with Google Lens.

- Add a contact from a business card or paper.
- Take a picture of a book cover to read reviews.
- Add events from flyers or billboards to your calendar.
- Identify different objects including plants and animals

- Scan barcodes to find out where to buy a product.
- Simplify your shopping routine. When you see an outfit you like, you can use Google Lens to identify every item and find out where you can buy it online.
- It also works for any other object you can find around the house, Google Lens will identify it in real-time.

How to open Google Lens

You can access Google Lens in many ways, but not all of them may be available on your device. Depending on your phone model, Google Lens might already be activated.

On Android devices, you might need to download the latest version of the Google app and the Google Photos app from the Google Play Store to activate Google Lens.

If you're an iPhone user, you can also enjoy the benefits of Google Lens. You'll need to download the Google Lens app from the App Store first. Then download the latest version of the Google app and the Google Photos app if you don't have them. When you open Google Lens and Google Photos for the first time, give the app permission to access your photos and videos.

However, all these options open the same app, and no one misses out on features. Here are the four easiest ways to access Google Lens.

1. Google Lens App

You don't need to install the Play Store app to use Lens, but it's the only way to get the standalone app on your homescreen.

2. Google Search widget



The Google Search widget contains a dedicated Lens button. Tap the **Lens** button on the right of the widget to open the app. You will need to have Google Chrome installed.

3. Google Photos

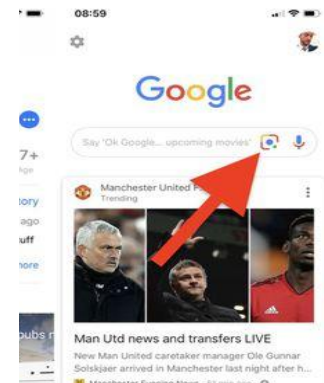
Open a photo in Google Photos and tap the **Lens** button in the lower-right corner of your screen.

4. Camera app

Depending on the app, you may have the option to open Lens in your camera. On Google Camera, tap the **Modes** button to access Lens.

How to use Google Lens

Google Lens works with a screenshot, a photo or by aiming your camera. The app is split into two halves by default. The top shows a live camera feed, and the bottom contains your photo library. Tap an image in the bottom half to let Lens work its magic on an existing photo, or expand the viewfinder at the top to identify things in front of you.



Google Lens shows a row of search options along the bottom of your screen. Tap the **Search** option to show results, or select one of the others if you have a specific purpose in mind (for example, to solve a maths problem or translate text). You can also tap the small magnifying glass in the lower-right corner of the original photo to define your search further with text.

How to use Google Lens with a screenshot

Google Lens identifies relevant information when you tap a screenshot. Swipe upward to see the complete search result.

How to use Google Lens with your camera

Point your camera at something and tap the shutter button. Google Lens identifies objects and marks them with a white dot. Tap one of these dots to show search results, and swipe up to see an expanded list.

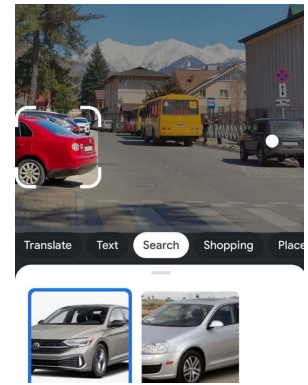
How to Use Google Lens with Your Saved Photos

Open the Google Photos app on your smartphone. All of the photos stored on your phone appear in the app's timeline. Open the image with an object you want to inspect using Google Lens. Select the **Lens icon** at the bottom of the screen. Or you can tap the picture icon at the top right of the camera view, tap **OK** in the permissions alert to allow Google to

access your photo library, then select a photo. Below the image, you'll find the description of the objects found in your picture, visual matches from the search engine, and several options that allow you to translate any text found on the photo, find similar items online for sale, and more.

Use Google Lens to assist your searching

You can select different objects and areas of the image to learn more about the things you captured on camera.



Scan your surroundings to learn more about the objects and places around you. You will see bubbles appear over the objects that Google Lens recognises. Selects different objects to search for matches and more information about them on Google.

